



Trent View College

Inspiring Horizons; Exceeding Expectations



WELLSPRING

We Make A Difference

Inspiring Horizons; Exceeding Expectations



Sarah Parker
Principal of Trent View College

Welcome to Trent View College

Wellspring Academy Trust in partnership with North Lincolnshire Council and the Department for Education, is proud to be opening a brand new purpose built P16 Special Free School in September 2023.

Wellspring is an inclusive and ethical Trust, currently leading 27 academies across Yorkshire and Lincolnshire. Provision at Trent View College is rooted within our four values:

Pride; Young people will be proud of their achievements and celebrate how much they have to offer.

Aspire; Young people and staff supporting them will aspire to be the very best that they can be, encouraging each other and celebrating all accomplishments.

Resilience; Young people will be emotionally resilient, always seeking new opportunities and embracing challenge.

Nurture; All young people and staff will be nurtured and will nurture each other. Kindness, care and compassion are a way of life at Trent View College, as this is what, we believe achieves the very best outcomes.

Trent View College aims to equip young people with essential skills for life, building on and enhancing their College journey.

Removing barriers to learning, we are a fully inclusive College, where individual differences are celebrated and aspirations are supported. Our aim is to develop inquisitive, aspirational and resilient young people who are fully equipped to engage and contribute to their own communities.



Our Curriculum Intention



Build

Build on and enhance previous skills, knowledge, experience and, where appropriate, qualifications.



Deepen

Deepen and consolidate learning, ensuring all skills and knowledge are relevant to young people's current and future lives.

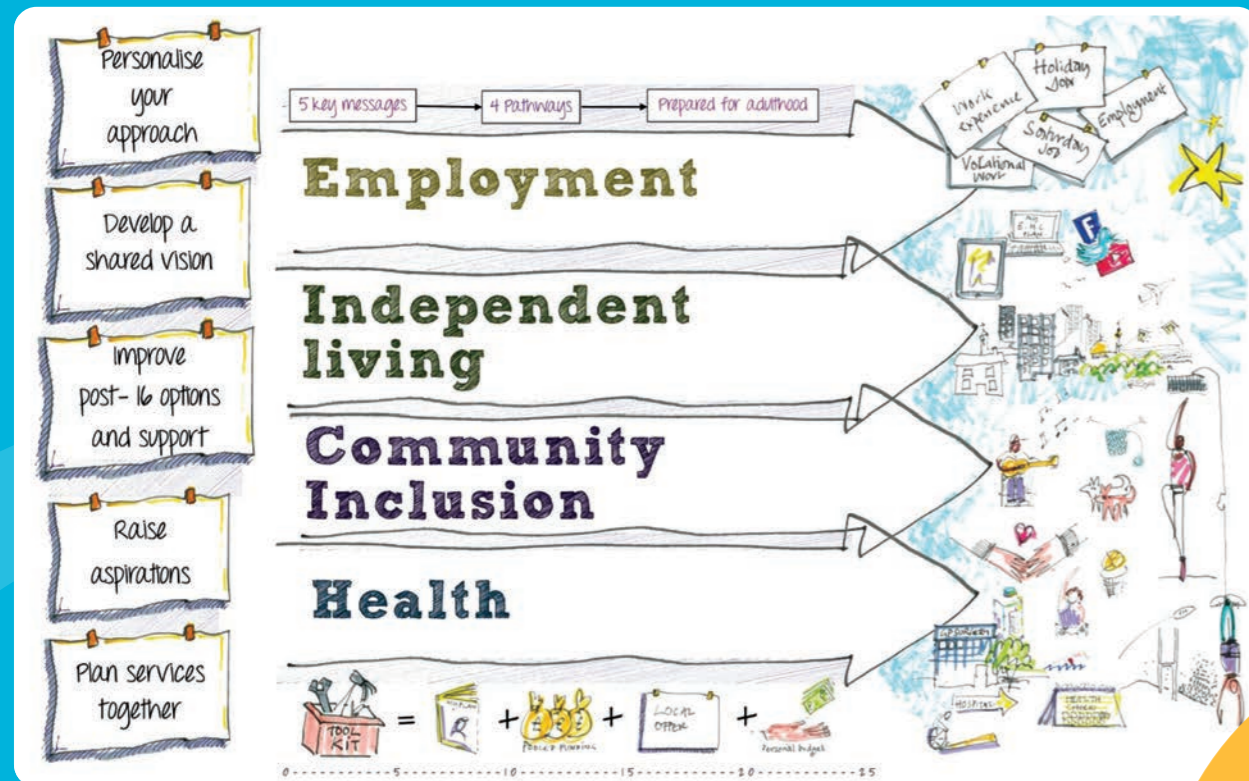


Prepare

Prepare young people for their next steps both physically and emotionally. Developing as much independence as possible whilst also equipping them with skills and knowledge to make informed and empowered decisions.



Curriculum Pathways

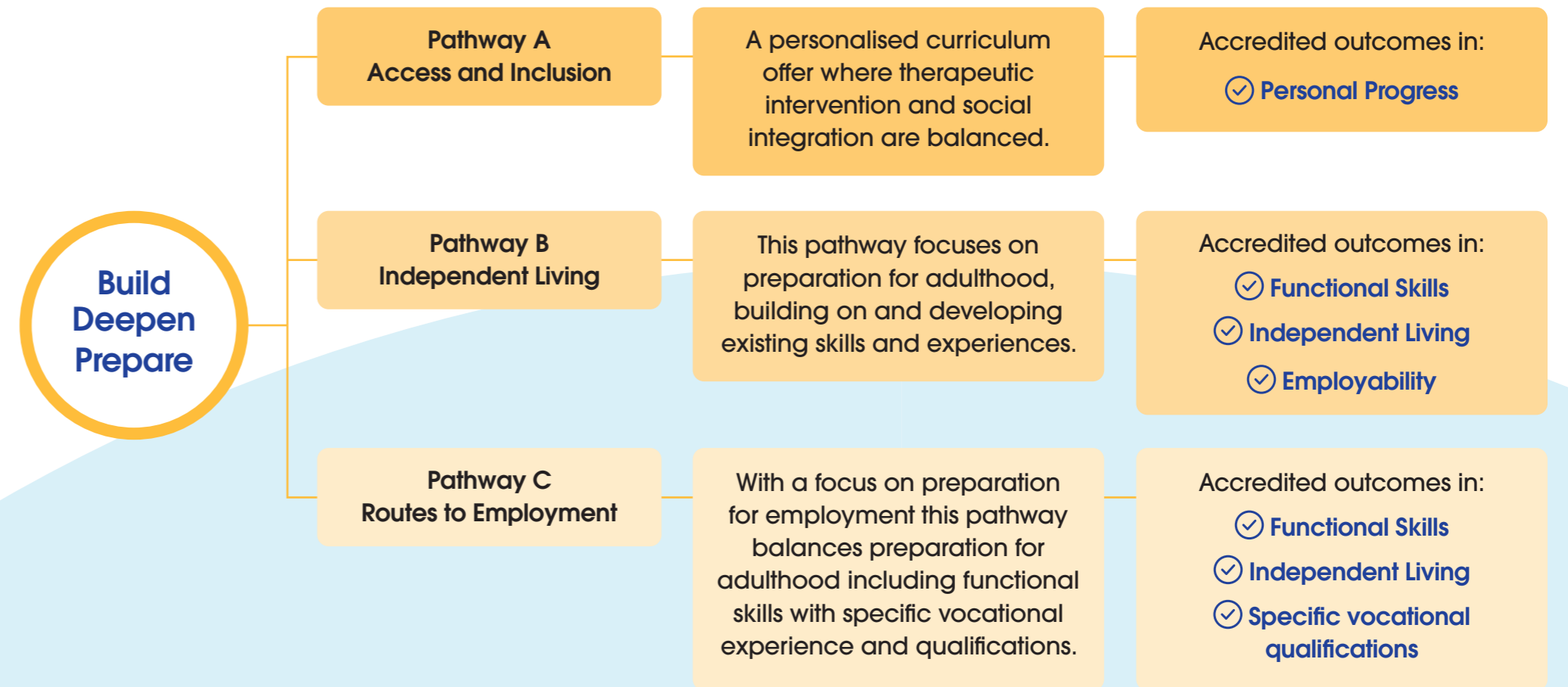


Young people will choose from 3 curriculum pathways dependent on their aspirations. All curriculum pathways promote opportunities for social inclusion and community integration.

Fundamental to our curriculum model are young people's EHCP outcomes and aspirations. Regardless of the pathway young people choose, our curriculums are highly personalised to ensure that all young people's needs are met.

Underpinned by the Preparing for Adulthood Agenda, our pathways ensure that young people are working towards their next steps.

Curriculum Pathways

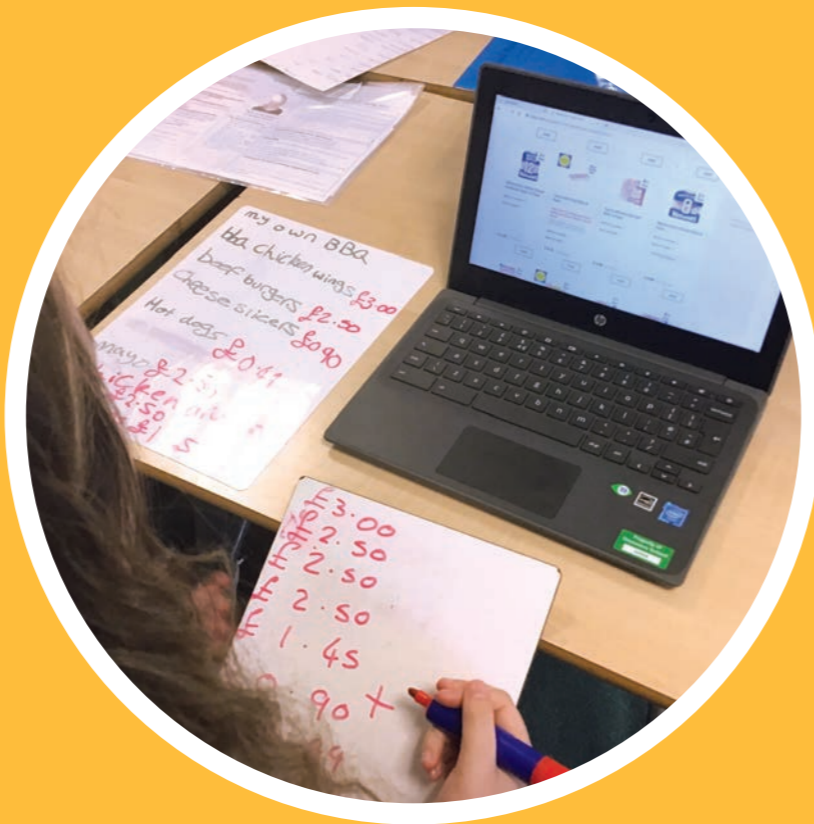


Functional Skills

All young people will engage in functional skills sessions, building on their own individual starting points. For some this will mean engaging in a highly personalised exploratory curriculum, providing a mixture of sensory and social opportunities.

Some students will build on previous qualifications and look to further enhance their qualification portfolio supporting their next steps in learning.

For others this will be about developing the necessary functionality of literacy, numeracy and ICT skills to ensure they are appropriately prepared for their adult lives.



Vocational Learning Options



Catering and Hospitality

Young people will work in a fully equipped training kitchen where they will provide the lunches for all young people.

As well as developing essential life skills, young people will have the opportunity to work towards a specific catering qualification.



Horticulture

This option provides young people with year round access to horticulture in our fully equipped poly tunnel and accessible raised beds. Young people will explore the therapeutic benefits of gardening and flowers whilst developing essential skills and knowledge in this area.



Workshop Skills and Mechanics

Our fully equipped workshop and mechanics suite provides the opportunity for young people to understand the workings of a car, including carrying out minor diagnostics and repairs. A wide variety of joinery machinery and tools allows young people to develop carpentry skills whilst also following appropriate health and safety policies.



Health and Beauty

The Health and Beauty option supports young people to understand the necessary skills required to access work within a health and beauty setting.

This option also provides young people with access to sensory and self care experiences.

Developing Independence



Build –

confidence accessing public transport and community facilities.



Deepen –

transferable skills, knowledge and experience both in school, home and the community.



Prepare –

for adulthood and a meaningful future.

Student Enrichment

At Trent View College, along with our specialist facilities, our holistic curriculum offer is further enhanced by: work experience opportunities, sports and arts options, access to rebound therapy and the opportunity to undertake a residential experience.



Our specialist facilities include:

- ✓ A fully accessible hydrotherapy pool with hoists
- ✓ Accessible changing and hygiene facilities
- ✓ A fully equipped physiotherapy space
- ✓ Sensory rooms
- ✓ Accessible training kitchen
- ✓ Accessible workshop and mechanics suite
- ✓ Music room
- ✓ Health and beauty salon
- ✓ Sports hall with performance space
- ✓ Outdoor horticulture area with accessible raised beds and poly tunnel
- ✓ Library area and reflective spaces
- ✓ Life skills cafe
- ✓ Accessible classrooms with interactive plasma screens



Working Together

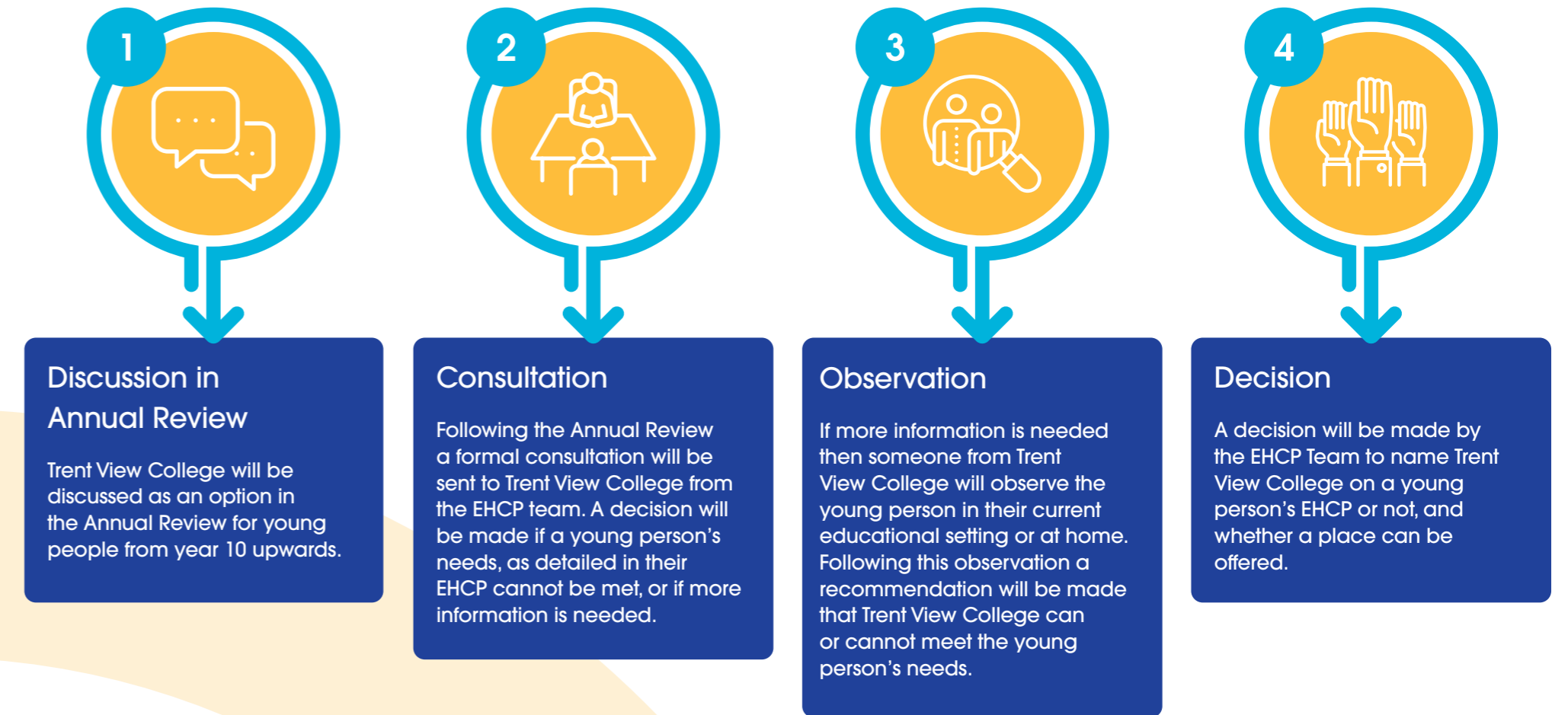
Our young people, their needs and aspirations are at the centre of everything we do.

At Trent View College, we understand how challenging the transition to adulthood can be for our young people and their families. This is why we work together with young people, their families and a range of professional partners to make this transition as smooth and successful as possible.

To strengthen this collaboration, we have dedicated spaces within our building for our professional partners to use.



Admissions Process



Where We Are



Trent View College

Inspiring Horizons; Exceeding Expectations

The proposed site is:
West Common Lane
Scunthorpe
DN17 1DS



WELLSPRING

We Make A Difference